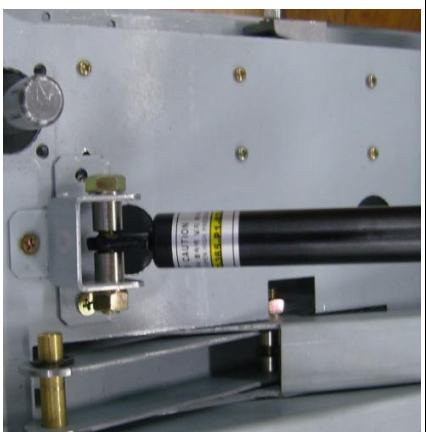


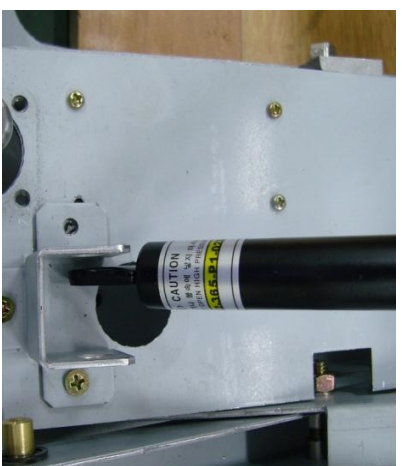
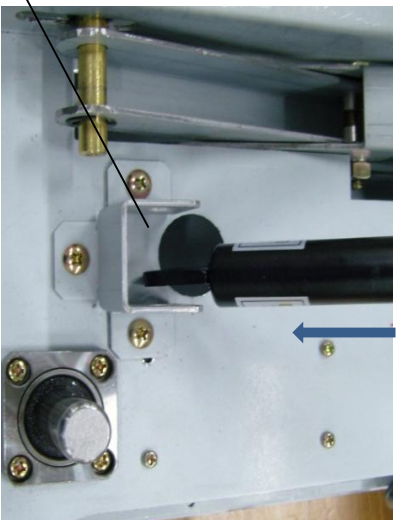
1. Lay down the bracket on the table
2. Push 'A' point to unlock the plate from the bracket
3. Lift up 'B' point

\* Lift up plate



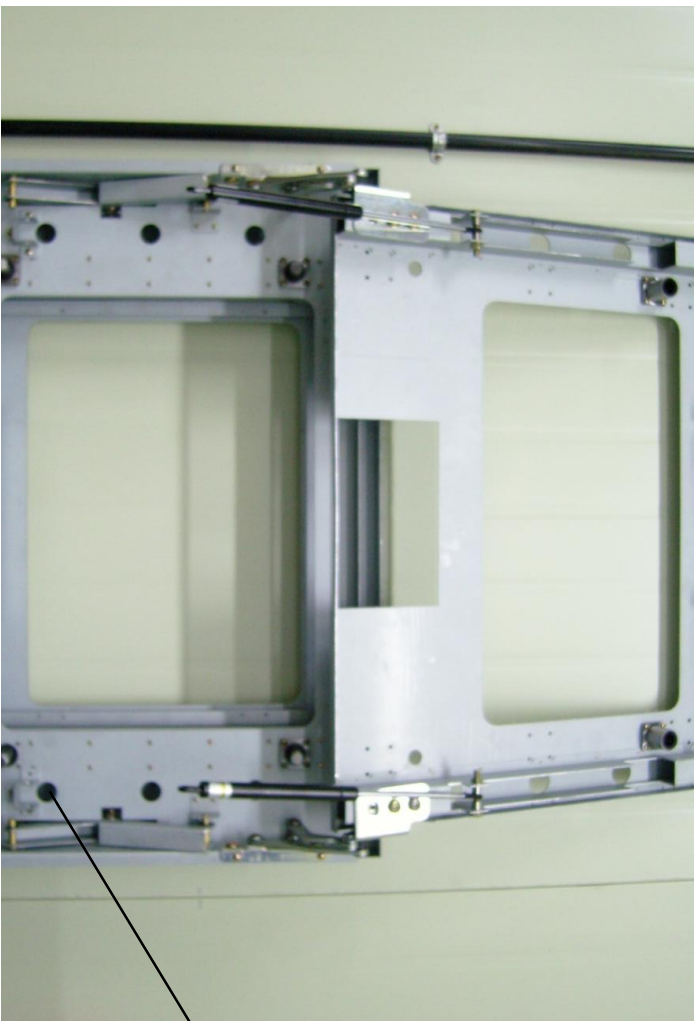
4. Unscrew bolts on right & left (C point)

C



\* Unscrewed status

D



5. Install the bracket on the wall with screws on mount holes (6 points)



MOUNT HOLE (diameter=7mm)

6. Screw the bolt (C point) again after installing the bracket



\* Screwed status



8. Put the panel on the plate



9. Fixing the bracket and panel with M5 screws (12 points)

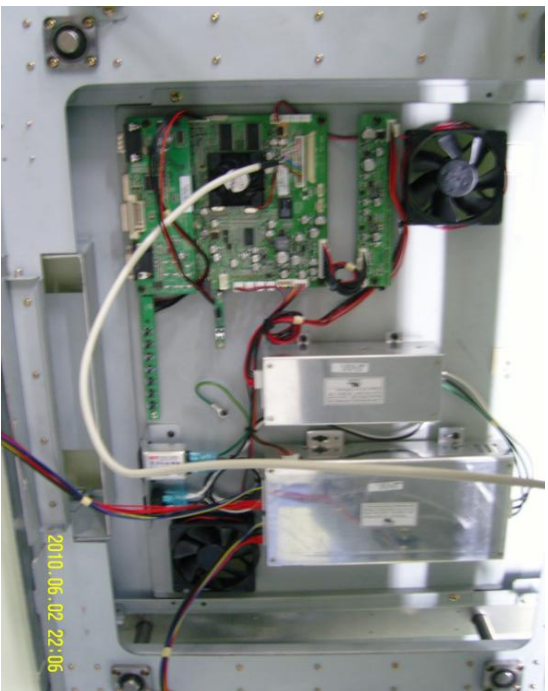


10. Let down the panel

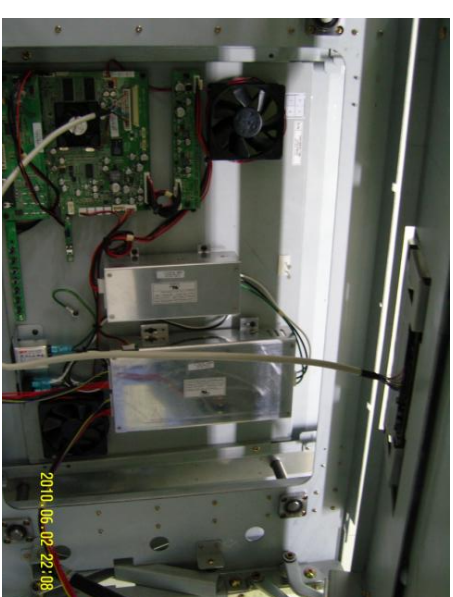


11. Push 'A' point to the backward for locking panel

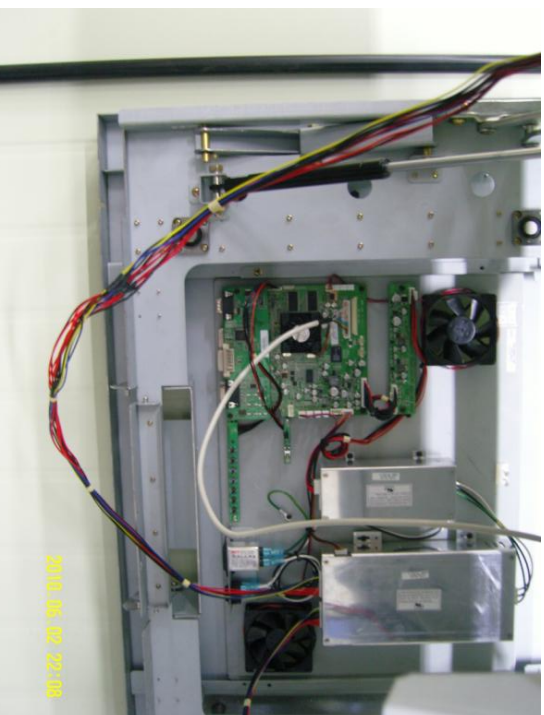
- \* After installing all brackets on the wall, fixing all panels
- \* Cabling after fixing panel



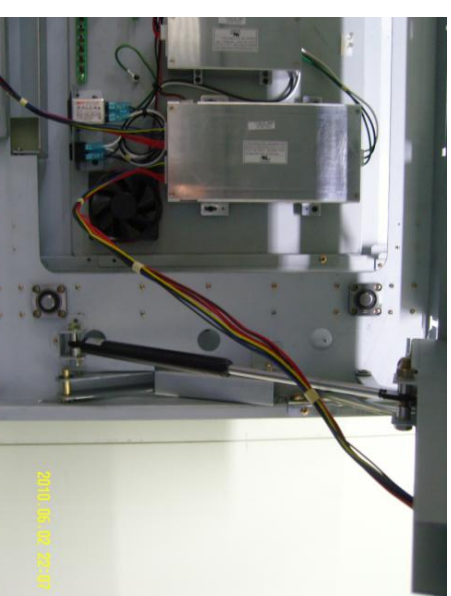
All boards are already assembled on board plate.



Connect LVDS cable between AV board and panel



Connect right inverter cable



Connect right inverter cable